



# NEW YORK YACHT CLUB 175th ANNIVERSARY REGATTA

July 14-20, 2019  
Newport, Rhode Island

## SAILING INSTRUCTIONS

### **1 RULES**

- 1.1** The regatta will be governed by the rules as defined in *The Racing Rules of Sailing* (RRS) including IRC Rules Parts A, B and C, ORC rules, NYYC Classics Rules incorporating CRF Mark II, the PHRF Regulations as administered by the PHRF of NB, and Class Rules for any one-design classes.
- 1.2** Safety Equipment Requirements:
- All boats shall minimally comply with the US Nearshore section of the NOR Addendum 1 – US Safety Equipment Requirements (USSER) and shall comply with their class rules, where applicable.
  - USSER 2.4.2, 2.4.3, and 2.4.4.1 through 2.4.9 regarding Hull and Structure: Lifelines shall apply, except that yachts not normally rigged with lifelines are exempt for these requirements and shall wear approved PFDs at all times while racing. This requirement does not apply to Classics, 6 Metres or 12 Metres, although they are strongly encouraged to wear PFDs.
  - In the event of a conflict between these requirements and applicable class rules, the class rules shall apply.
- 1.4** NOR Addendum 2 – US SAILING Prescriptions to the RRS shall apply. Only the prescriptions listed in this Addendum shall apply.
- 1.5** The NYYC Classics Rules that are posted as NOR Addendum 3 shall apply to all boats sailing in the Classics division.
- 1.6** IRC Class only:
- a) The current IRC Rules and Regulations paragraphs A, B and C shall apply to boats racing under IRC.
  - b) IRC Rules 21.1.5 (d) and (e) are changed as follows: During the regatta, the sails carried (including mainsails and spinnakers) may vary from day to day, but shall remain the same for each individual race day, including days with multiple races even in the case of damage to sails. The race day begins when the boat first leaves the dock or its mooring for the race course.
- 1.7** The current PHRF-NB Regulations shall apply to boats racing under PHRF. There are no crew weight limits.
- 1.8** The current ORC Rating Systems shall apply to boats racing under ORC.
- 1.9** The current class rules shall apply to all boats racing as a one-design class, except as noted in these sailing instructions.
- 1.10** 12 Metre Class only:
- Man Overboard - In the event that a crew member has been lost overboard and detached from the boat, then that boat shall immediately:
    - a) sail clear and stand by to recover the crew member, and
    - b) notify the Race Committee on the fleet VHF channel that a crew member has been lost overboard.It is expected that the closest vessel, including racing boats or support boat shall immediately proceed to render aid. This provision DOES NOT modify Rule 1.1 in any way. The boat whose crew member was lost overboard shall be scored equal to the number of starters without a hearing for that race. This changes RRS 63.1.
  - Class Rule 40 is amended as follows: All Divisions will be allowed to carry one Rider, in addition to the crew numbers allowed in Rule 40 as modified by Appendix E. The Rider may not participate, either physically or verbally, in any sailing related activities while the boat is racing; unless the action is required for the safety of the vessel or its crew. In the event that the Rider does engage in such activities while racing for any reason, then the boat shall immediately retire from that race.

- 1.11** Liability Waiver: No crew shall be aboard a boat while racing unless he/she has executed the online Liability Waiver Form. The Liability Waiver Forms are available on the [event webpage](#). Registration will not be complete without receipt of a complete Crew Waiver Form from each crew member.
- 2 COMMUNICATIONS: NOTICES, ANNOUNCEMENTS, VHF CHANNELS**
- 2.1** Notices, including race documents, results, and amendments, shall be posted on the Official Notice Board. Jury information, including protest time limits and hearing schedules, shall be posted on the Jury Notice Board. Both boards are located in the courtyard of the NYYC Sailing Center at Harbour Court. This information may also be posted on the event website.
- 2.2** Any change to the sailing instructions will be posted before 0900 on the day it will take effect, except that any change to the schedule of races will be posted by 2000 on the day before it will take effect. Flag “Lima” will be flown to signify such posting.
- 2.3** In addition to the signals described in SI 3.3, the Race Committee will endeavor to announce the circle assignments, format and the rendezvous locations as described in SI 5 and SI 6 at 0900 over VHF Channel 72. The failure to make this announcement or for a boat to hear this announcement will not be grounds for a boat to request redress. This changes RRS 62.1(a).
- 2.4** After the rendezvous locations and any other regatta announcements have been made, Race Committee signal boats will monitor and communicate with their respective classes on the circle VHF channels published in SI 2.5.
- 2.5** VHF Channels - The Race Committee VHF channels for each circle are shown below:
- |              |                        |
|--------------|------------------------|
| Blue Circle  | VHF Channel 72         |
| White Circle | VHF Channel 69         |
| Green Circle | VHF Channel 71         |
| Red Circle   | VHF Channel 1079 (79A) |
- 2.6** Each yacht shall carry a VHF radio capable of communicating with the Race Committee on their circle channel.
- 3 SIGNALS MADE ASHORE**
- 3.1** Flag signals will be flown from the flagpole at Harbour Court.
- 3.2** When pennant “AP” is displayed ashore, “one minute” is replaced with “not less than one hour” in race signal “AP”.
- 3.3** Signals designating the rendezvous locations for all circles will be displayed at 0900 each day from the flagpole at Harbour Court.
- 4 SCHEDULE OF RACES**
- 4.1** The warning signals are scheduled for 1100 for all circles on Monday, July 15, Tuesday, July 16, Thursday, July 18, Friday, July 19 and Saturday July 20.
- 4.2** For all classes on Tuesday, July 16 and Saturday, July 20, the initial warning signal for the final race of the first class will not be made after 1500hrs. The warning signal for a start following one or more general recalls, or for subsequent classes may be made after 1500.
- 5 CLASSES, CLASS FLAGS, SCRATCH SHEETS AND FORMAT**
- 5.1** **Classes** – Each class will be given a numeral designation and be assigned each day to one of four circles (Blue, White, Green, or Red). Note that a class may sail in different circles and be assigned different numeral designations on different days.
- 5.2** **Format** – The Race Committee will notify competitors (no later than 1900 on the day before they will take effect) of the circle assignments for each class and the intended type of racing for the following day:
- a) Navigator Races – SI Addendum A (using government marks and racing marks on Narragansett Bay and/or Rhode Island Sound)
  - b) Drop Mark Races – SI Addendum B (using inflatable buoys on Rhode Island Sound and/or Narragansett Bay)
- 5.3** **Scratch Sheets** – Final Scratch sheets will be posted on the Official Notice Board as soon as possible following registration and may also be posted on the regatta website.

- 5.4 Class Flags** – Unless indicated on the scratch sheet, each boat shall display the numeric or alphabetic flag corresponding to her class designation, as shown on the scratch sheet, from her backstay approximately six feet above the deck from the warning signal for the first class on her circle until she is no longer racing. Boats without a permanent backstay shall conspicuously display these flags in an alternate position in the aft part of the boat.

## **6 RENDEZVOUS LOCATIONS**

- 6.1** Circle rendezvous locations are listed below and will be designated as described in SI 3.3. See SI Addendum C – NYYC Primary Race Areas.

### **Rhode Island Sound:**

- Area “A” -in the vicinity of 160° M for 1.2 NM from R “2” QR Whistle marking Brenton Point
- Area “B” -in the vicinity of 120° M for 2.5 NM from R “2” QR Whistle marking Brenton Point
- Area “C” -in the vicinity of 275° M for 3.0 NM from R “2” QR Whistle marking Brenton Point
- Area “D” -in the vicinity of 225° M for 2.0 NM from R “2” QR Whistle marking Brenton Point
- Area “E” -in the vicinity of 165° M for 5.0 NM from R “2” QR Whistle marking Brenton Point
- Area “F” -in the vicinity of 145° M for 3.5 NM from R “2” QR Whistle marking Brenton Point

### **Newport Harbor and near Newport Bridge:**

- Area “K” -between Goat Island and Rose Island
- Area “M” -in the vicinity of R “12” west of Rose Island

### **North of Newport Bridge:**

- Area “O” -in the vicinity of Potter Cove (just north of west end of Newport Bridge)
- Area “R” -in the vicinity of 200° for 0.5 NM from Halfway Rock
- Area “T” -in the vicinity of G “7” QG off Quonset Point

- 6.2** Once on station, the Race Committee may announce the lat/long positions of the signal boat and starting mark over the circle VHF channel. Failure to make such an announcement, nor the timing of any announcement, shall not be grounds for a boat to request redress. This changes RRS 62.1(a).

## **7 CHECK-IN AND RETIREMENT**

- 7.1 Check-in on Land:** Each boat shall check-in at the registration desk at the NYYC Sailing Center at Harbour Court during the registration times so designated in the notice of race.
- 7.2 Check in on Water:** Prior to their course signal each day, each boat shall check in with the Race Committee signal boat by sailing or motoring by the stern of the signal boat and announcing her sail number.
- 7.3** Boats retiring shall inform the Race Committee on their circle VHF channel or by calling (401) 845-9633.

## **8 COURSES & MARKS**

The courses and marks are described in the SI Appendices as shown:

Courses using Government Marks	SI Addendum A
Drop Mark Courses	SI Addendum B

## **9 THE START**

- 9.1** A boat starting later than 10 minutes after her starting signal will be scored Did Not Start. This changes RRS A4.
- 9.2** The starting line will be between a staff displaying an orange flag on the Race Committee signal boat and the course side of the port-end starting mark as described in the relevant SI Addendum.
- 9.3** Boats whose warning signal has not been made shall keep clear of the starting area from the time of the course signals for the first start in the sequence until the warning signal for their class.
- 9.4** Course signals will be made no later than 5 minutes prior to the first warning in the sequence.
- 9.5** The Race Committee will endeavor to hail boats identified as OCS at the start over their respective circle VHF channel. Failure to hail, the timing or order of any such hails, will not be grounds for a boat to request redress. This changes RRS 62.1(a).

## **10 CHANGE OF COURSE**

See Addendum B – Drop Mark Courses.

## **11 THE FINISH**

The finishing line will be between a staff displaying a blue flag on the Race Committee signal boat and the course side of the finishing mark as described in the relevant SI Addendum.

## **12 PENALTY SYSTEM**

- 12.1** If class rules specify a penalty, a boat that may have broken a rule of Part 2 while racing may take a penalty at the time of the incident as provided in her class rules. If the class rules do not specify a penalty, RRS 44.1 is changed so that a boat can either take a penalty in accordance RRS 44.1 or a scoring penalty in accordance with RRS 44.3.
- 12.2** The Protest Committee may impose suitable penalties, other than disqualification, for violations of the World Sailing Offshore Special Regulations or other non-Part 2 rules. This changes RRS 64.1.
- 12.3** A boat that has taken a penalty shall complete an online penalty acknowledgement form or a paper form available from the Jury Secretary and submit/file it with the Jury Secretary no later than the end of protest time.

## **13 TIME LIMIT**

- 13.1** For courses designated in accordance with SI Addendum A1.4 the time limit for the first boat to sail the course and finish is five hours. Yachts failing to finish within 90 minutes after the first boat sails the course and finishes will be scored Time Limit Expired (TLE) and scored points as described in SI 15.4. This changes RRS 35, A4 and A5.
- 13.2** For courses designated in accordance with SI Addendum B, the time limit for the first boat to sail the course and finish is three hours. Yachts failing to finish within 45 minutes after the first boat sails the course and finishes will be scored Time Limit Expired (TLE) and scored points as described in SI 15.4. This changes RRS 35, A4 and A5.

## **14 PROTESTS AND REQUESTS FOR REDRESS**

- 14.1** Protests or requests for redress shall be submitted to the Jury Secretary in the NYYC Sailing Center or on the online protest form as soon as possible, but not later than one hour after the Race Committee signal boat for that circle has docked. The time limits for filing a protest will be posted on the Official Notice Board.
- 14.2** Protest notices will be posted as soon as possible on the Jury Notice Board.
- 14.3** Protest hearings will take place at the NYYC Sailing Center as soon as possible after the notices are posted. The Protest Committee will attempt to hear protests in the order of receipt. Representatives of boats who are parties to a hearing shall remain on call in the vicinity of the protest rooms.
- 14.4** When a boat has been involved in an incident that may be subject to protest, it is her responsibility to check the protest notices at the end of the protest filing time to see if she is cited in a protest. Failure of any boat to appear when called for a hearing will be considered by the Protest Committee as grounds for proceeding under RRS 63.3(b).
- 14.5** Breaches of SIs 5.4, 7, and 9.3 will not be grounds for a protest by a boat. This changes RRS 60.1(a).
- 14.6** The penalty for a breach of SI 9.3 shall be a minimum of two points. This changes RRS 64.1.
- 14.7** On the last scheduled day of racing, a written request for reopening a hearing shall be delivered to the Jury Secretary in accordance with RRS 66. If no races are held on the last scheduled day of racing, the written request shall be delivered within one hour after racing has been abandoned. This changes RRS 66.
- 14.8** On the last scheduled day of racing, a request for redress based on a Protest Committee decision shall be delivered in writing no later than 30 minutes after the decision was posted. This changes RRS 62.2.

## **15 SCORING**

- 15.1** A boat's series score will be the total of her race scores. This changes RRS A2.
- 15.2** One race is required to be completed to constitute a series.
- 15.3** Boats that have started and fail to finish within the finish window listed in SI 13.1 or SI 13.2 for any reason, shall, without a hearing, be scored Time Limited Expired (TLE) by the Race Committee and be assigned points equal to the number of boats in her class that have sailed the course and finished within the time limit, plus two. This changes RRS A4.1, A4.2, and A5.
- 15.4** Teams competing for the 175th Team Trophy will be scored in accordance with the notice of race.
- 15.5** For scoring purposes, the distance used (as needed) will be that as calculated by the Race Committee.

## **16 PRIZES**

- 16.1** Prizes will be awarded as described in the notice of race.
- 16.2** Additional prizes may be awarded at the discretion of the OA.

## **17 WAIVER & RELEASE OF LIABILITY**

- 17.1** Competitors participate in the regatta entirely at their own risk. See RRS 4, Decision to Race. The Organizing Authority, New York Yacht Club, and any official sponsors will not accept any liability for material damage or personal injury or death sustained in conjunction with or prior to, during, or after the regatta. Attention is also drawn to RRS 46 and USSER 1.2, Responsibility.
- 17.2** As a condition of entry, each owner, skipper and individual participating crew member shall submit an online liability waiver/media release. The fully executed [Waiver & Release of Liability form](#) shall be submitted prior to racing. The waiver form link can be found on the Annual Regatta website.
- 17.3** Boats shall not be scored unless the skipper/person-in-charge has submitted a liability & media waiver form.

## **18 SAFETY REGULATIONS**

- 18.1** Restricted Channels: Competitors are reminded that Narragansett Bay and its approaches are considered restricted channels for commercial traffic and other vessels restricted in their ability to maneuver. Competitors must comply with the government right-of-way rules when in proximity to commercial or privileged marine traffic.
- 18.2** Newport Security Zone: In the event there is racing in Narragansett Bay, competitors should be aware of heightened security around the Navy base in Newport just to the north of the Newport Jamestown Bridge. The area may be defined by a series of white buoys marking the Newport Security Zone along the coast of the Naval Facilities from Coasters Harbor to the breakwater at the north end of Coddington Cove and the line defined by the buoys shall rank as an obstruction. Yachts shall not enter this area. A Navy patrol boat monitors the area and vessels navigating in the Exclusionary Zone may face action by Coast Guard and Naval authorities.
- 18.3** Additional Restricted Areas: There may be additional restricted areas due to Navy activity, shipping or fishing operations may be described in an amendment to the sailing instructions.

## **19 NOTES**

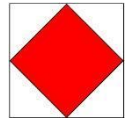
- 19.1** The event website can be found at <https://nyyc.org/175th-anniversary-regatta>.
- 19.2** For further information please contact:
  - New York Yacht Club, Harbour Court
  - 5 Halidon Avenue
  - Newport, RI 02840
  - Tel: 401-845-9633
  - Fax: 401-846-3303
  - Email: [sailingoffice@nyyc.org](mailto:sailingoffice@nyyc.org)

# SAILING INSTRUCTIONS

## **ADDENDUM A – COURSES USING GOVERNMENT MARKS**

### **A1 COURSES**

- A1.1** All boats shall pass through the center span only for any course passing under the Jamestown Verrazano Bridge and/or the Newport Jamestown Bridge. For the purposes of RRS 32.2(c), the center span shall be considered a gate.
- A1.2** Government marks shall have no required side except when designated as a rounding mark.
- A1.3** The flag(s) designating the course to be sailed will be displayed at course signals. The Race Committee will endeavor to announce the designated courses over the circle VHF channel. Failure to make such an announcement shall not be grounds for a boat to request redress. This changes RRS 62.1(a).
- A1.4** **COURSE 1** - If numeral pennant "1" is displayed, the course will be designated using buoys as described in SI Addendum A2. The Race Committee will list the marks in the order to be rounded and the required side to leave each mark. The course will be:
- Start
  - Round the marks in the designated order leaving each mark to the designated side
  - Finish between a staff displaying the blue flag on the Race Committee boat and the nearby finishing mark.
- Note that the intended finishing line will be set at the starting location of the Race Committee signal boat.
- A1.5** The Race Committee vessel at the finish may or may not be the same vessel that started the race.
- A1.6** If at the start, Flag "F" is displayed on a separate pole, the finishing line will be between a staff displaying a blue flag on a Race Committee boat and the nearby finishing mark approximately 0.4 NM north of the Fl R 6 sec Horn "2" on the northern point of Fort Adams. In the absence of the Race Committee boat and/or finishing mark, the finishing line will be on a bearing of 120° M from G "3" Gong southeast of Rose Island.



### **A2 MARKS**

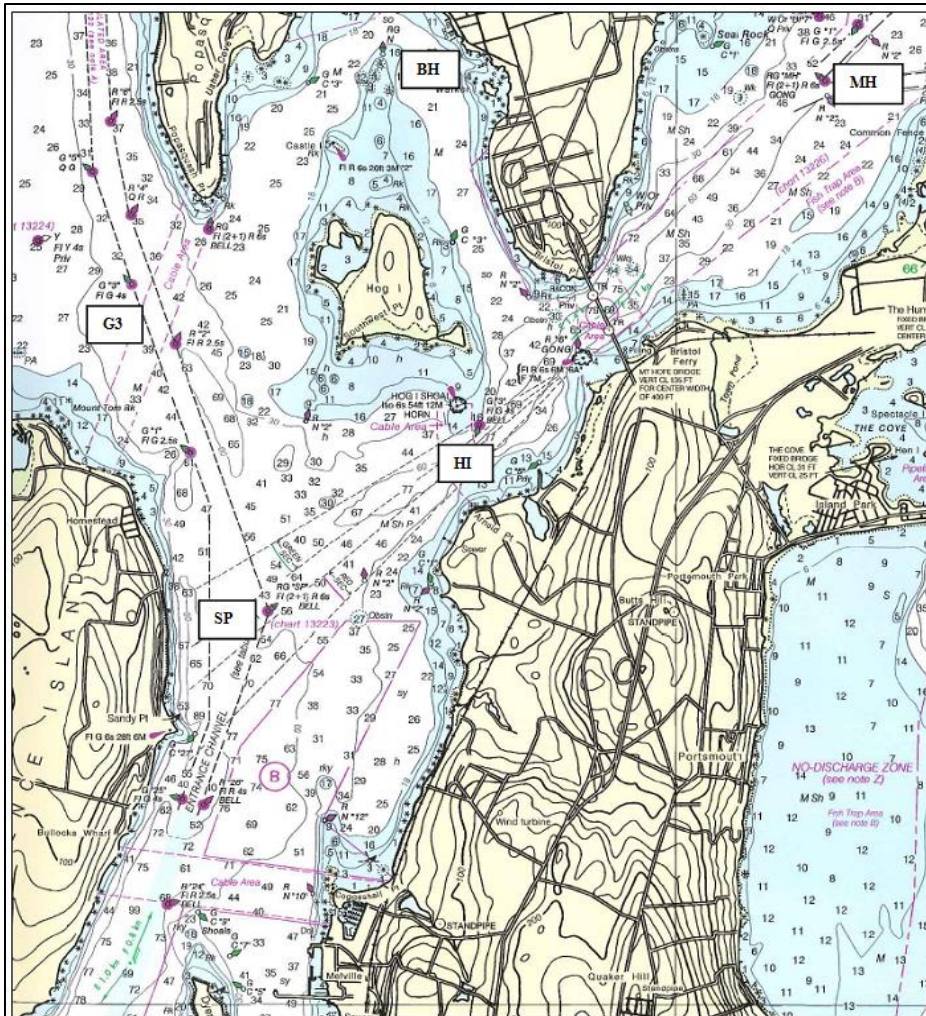
- A2.1** The starting mark will be a green tetrahedron buoy.
- A2.2** The finishing mark will be a pink tetrahedron buoy. The finish mark if using an "F" finish as described in A1.6 will be an orange tetrahedron buoy.
- A2.3** Special Marks "E" and "L", if used, will be the same as the original mark colors for each circle as described in SI B2.1.
- A2.4** If used, Special NYYC Temporary Inflatable Race Marks 16 and 17 as designated on the current South Bay Race Chart will be orange tetrahedron buoys.
- A2.5** All buoys listed on the current *South Bay Race Chart* provided at registration may be used in Course 1. In addition, the marks listed in SI Addendum A2.6, A2.7 and A2.8 below are additional rounding marks that might be used.
- A2.6** **Special Mark "E"**
- The Race Committee may add a new first mark "E" to any course described in SI Addendum A1.
  - If special mark "E" is used, the Race Committee will display flag "E" over a GREEN flag (round special mark "E" to STARBOARD) or over a RED flag (round special mark "E" to PORT).
  - In Course 1, the Race Committee will also list "E" as the first mark on the course board as described in SI A1.4.
  - The magnetic bearing and distance (in nautical miles to the nearest tenth) to special mark "E" will be posted on a whiteboard on the Race Committee signal boat.
- A2.7** **Special Mark "L"**
- The Race Committee may set special mark "L" approximately 0.1 NM to windward of the start line.
  - If special mark "L" is used, it will be listed as a mark as described in SI Addendum A1.4.



## A2.8 GOVERNMENT MARKS & ISLANDS

See charts 13205, 13218, 13223, 13226 and 13224 for more detail.

<u>Description</u>	<u>Approx. location</u>
1 Gould Island	41° 32.00' N; 071° 20.67' W (center of island)
3 Hope I (east of Quonset) including R "2" at the southwest end and G C "1" at the northeast end	
4 Conanicut Island	
5 RW "NB" Mo(A) WHIS	41° 23.00' N; 071° 23.36' W
7 R "2" Fl R 4s WHIS south of Point Judith	41° 18.46' N; 071° 28.35' W
8 RW "SR" Mo(A) WHIS	41° 25.76' N; 071° 13.38' W
IBI G "1 BI" Fl G 4s BELL north of Block I	41° 15.49' N; 071° 34.55' W
M Block Island including:	
R "4" Fl R 6s WHIS off Southwest Pt	41° 08.73' N; 071° 37.35' W
Black Rock Pt. Buoy 2	41° 08.42' N; 071° 35.74' W
U Buzzards Light Tower Fl 2.5s 67ft 17M Horn	41° 23.82' N, 071° 02.08' W
PR Prudence Island including R "8" northwest of Patience Island and RG N at the northern end	
SP RG "SP" Fl (2+1) R 6s BELL	41° 36.92' N; 071° 17.59' W
G3 G "3" Fl G 4s (approx. 0.5 NM sw of Popasquash Neck)	41° 38.53' N; 071° 18.46' W
MH RGR "MH" Fl (2 +1) R 6s GONG in Mt. Hope Bay	41° 39.54' N; 071° 14.04' W
BH RGR N "Middle Ground Buoy" approx. 0.8 NM n of Hog I	41° 39.68' N; 071° 16.87' W
HI G "3" Fl G 4s BELL approx. 0.4 NM south southeast of Hog I	41° 37.79' N; 071° 16.29' W



Marks near Prudence Island, Bristol and Mt. Hope Bay

# SAILING INSTRUCTIONS

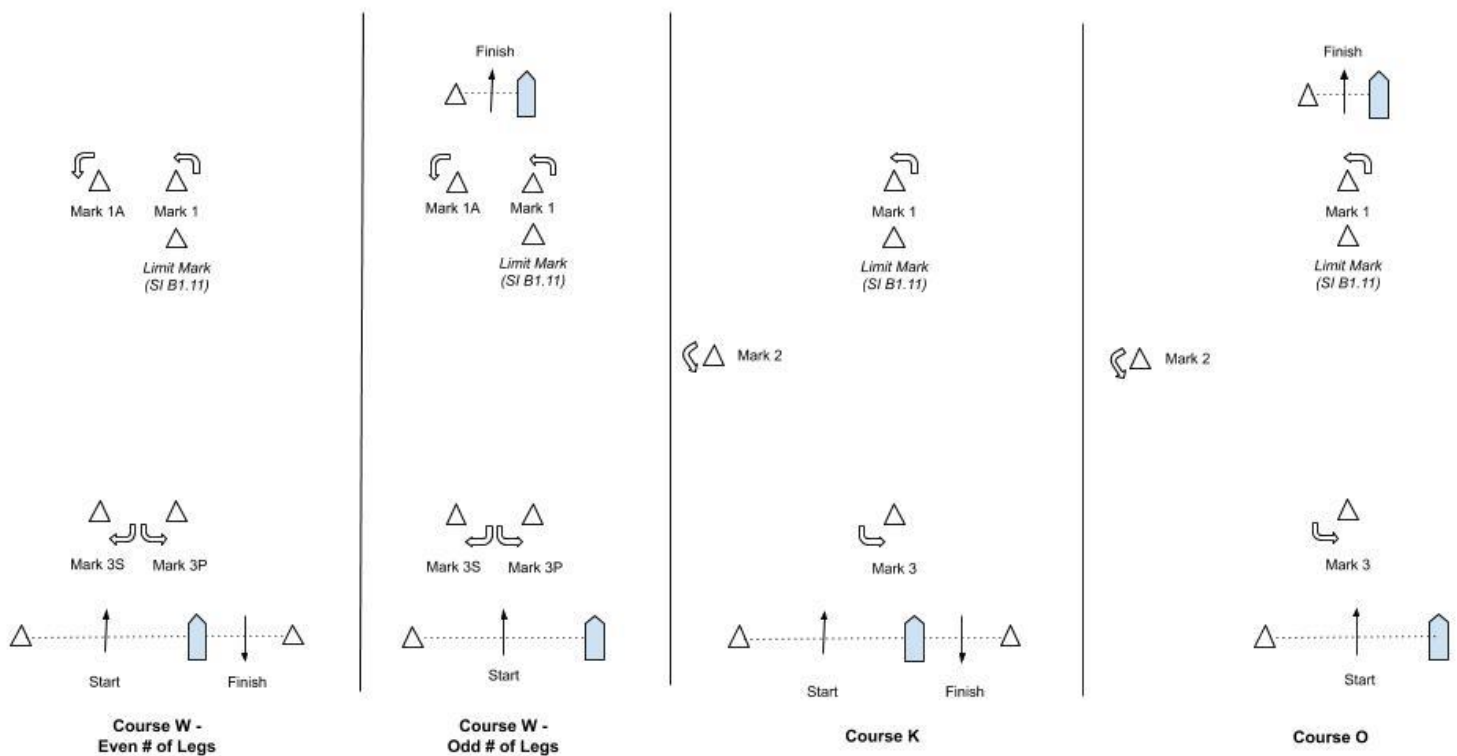
## ADDENDUM B – DROP MARK RACES

### B1 COURSES FOR DROP MARK RACES

**B1.1** The Race Committee signal boat will signal the course by displaying a letter flag and, for course “W”, a numeral pennant as follows:

- W2 Start – 1 – 1A – Finish (downwind)
- W3 Start – 1 – 1A – Gate (3S/3P) – Finish (upwind)
- W4 Start – 1 – 1A – Gate (3S/3P) – 1 – 1A – Finish (downwind)
- W5 Start – 1 – 1A – Gate (3S/3P) – 1 – 1A – Gate (3S/3P) – Finish (upwind)
- W6 Start – 1 – 1A – Gate (3S/3P) – 1 – 1A – Gate (3S/3P) – 1 – 1A – Finish (downwind)
- O Start – 1 – 2 – 3 – 1 – 3 – Finish (upwind)
- K Start – 1 – 2 – 3 – 1 – Finish (downwind)

### B1.2 Course Diagrams:



**B1.2** Course “W” is a Windward/Leeward course with a windward offset mark. A numeral pennant indicating the number of **LEGS** to be raced will be flown beneath Flag “W”. The distance between the windward mark and the offset mark shall not count as a leg for the purposes of indicating the number of legs.

**B1.3** Course “O” is a Triangle/Windward/Leeward/Windward course.

**B1.4** Course “K” is a Triangle/Windward/Leeward course.

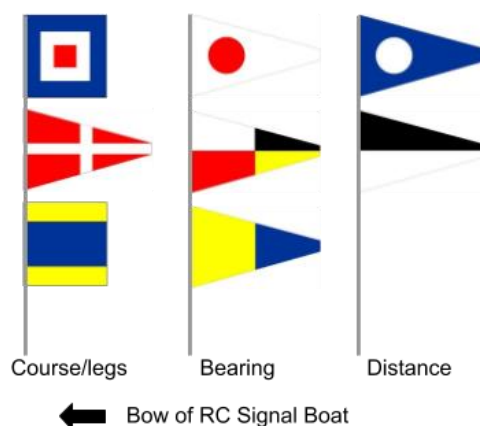
**B1.5** The leeward mark for Courses “W”, “O”, and “K” will be an inflatable mark(s) set approximately 0.10 NM to windward of the starting line. A gate mark 3S/3P may be used for Course “W”.



**B1.6** The course designation, distance and bearing to the windward mark will be signaled using flags displayed on poles or a whiteboard. If using flags, the course designation will be flown forward, followed by the three numeral pennants designating the magnetic bearing to the first mark, followed by the two numeral pennants designating distance (nautical miles and tenths) to the first mark.

*Example shown:*

*Course W4 with a long windward mark (see SI B1.9); windward mark 195° at 2.6 nm*



**B1.7** Marks, including the windward offset mark, shall be rounded in order and always left to port, except that a gate, when used, shall be rounded as described in RRS 28.2(c).

**B1.8** There will be a windward offset mark adjacent to the windward mark for courses W2, W3, W4, W5, and W6.

**B1.9 Long Windward Mark:**

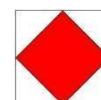
- For course “W” with an even number of legs, the Race Committee may set a long windward mark and a short windward mark.
- The distance displayed will be to the short windward mark. The long windward mark will be on the same bearing at a distance of 0.5 NM beyond the short windward mark.
- There will be no offset mark at the long windward mark.
- If flag “D” is displayed below the course signals (see diagram on previous page), that class will use the long windward mark for each weather leg in that race. If flag “D” is NOT displayed below the course signals, that class will use the short windward mark for each weather leg in that race.



This changes SI Addendum B1.1, B1.2, B1.7, B1.8 and B2.2.

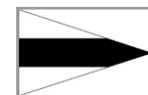
**B1.10 Special Finish Mark “F”**

If flag “F” is displayed on a separate pole, the finishing line for that class will be between a staff displaying a blue flag on a Race Committee boat and the nearby orange finishing mark approximately 0.4 NM north of the Fl R 6 sec Horn “2” on the northern point of Fort Adams. In the absence of the Race Committee boat and/or finishing mark, the finishing line will be on a bearing of 120° from G “3” Gong southeast of Rose Island. This changes SI Addendum B1.1, SI Addendum D1.2, D1.7 and D2.1.



**B1.11 Limit Mark**

- The Race Committee may set a pink inflatable limit mark approximately 6-8 boat lengths to leeward of the windward mark with the intention of keeping boats away from the port tack layline.
- The limit mark shall be left to port on both the upwind and the downwind legs.
- In the event of a change of course to the windward mark after the first windward mark rounding in that race, the limit mark will not be set.
- The location of the limit mark or the failure of the race committee to set the limit mark shall not be grounds for a boat to request redress. This changes rule 62.1(a).
- The Race Committee will display flag “Third Substitute” if the limit mark will be set.



**B2 MARKS FOR DROP MARK COURSES**

**B2.1** Marks will be inflatable buoys as follows:

Circle	Original marks	Starting	Finishing	Change marks
WHITE	Orange	Green	Pink	Yellow
BLUE	Yellow	Green	Pink	Orange
RED	Yellow	Green	Pink	Orange
GREEN	Yellow	Green	Pink	Orange

### **B3 COURSE CHANGE**

- B3.1** To change the next leg of the course, the Race Committee will lay a new mark (or move the finishing line) and remove the original mark as soon as practicable. When in a subsequent change a new mark is replaced, it will be replaced by an original mark.
- B3.2** The race committee may change the course by up to five degrees in bearing and/or 0.2 nm in length without a signal or change of mark color. This changes RRS 33.
- B3.2** In addition to the requirements in RRS 33, the Race Committee will attempt to announce any course change on their respective circle VHF channel. Failure to make such an announcement shall not be grounds for a boat to request redress. This changes RRS 62.1(a).

### **B4 THE FINISH**

- B4.1** The finishing line will be between a staff displaying a blue flag on a Race Committee boat and the nearby finishing mark.
- a) For Course “W”, with an odd number of legs, and Course “O”, the finish line will be located approximately 0.1 NM to windward of the windward mark.
  - b) For Course “W”, with an even number of legs, and Course “K”, the finish line will be located approximately 0.1 NM to leeward of the leeward mark and the finishing mark will be on the opposite side of the Race Committee signal boat from the starting mark. See diagrams in SI Addendum B1.1.
- B4.2** If a subsequent race is to be sailed, the finish line Race Committee boat intends to fly Pennant “Second Substitute” with the Blue “On-Station” signal at the finish. If a Class Flag is displayed below Pennant “Second Substitute” the subsequent race is for that class(es) only. In addition, the Race Committee will attempt to announce a subsequent race on their respective circle VHF channel.
- B4.3** The Race Committee vessel at the finish may or may not be the same vessel that started the race.

**SAILING INSTRUCTIONS**  
**ADDENDUM C – NYYC PRIMARY RACE AREAS**

